

INSTRUMENT APPROACH CHART - ICAO

KEMBLE

RNP

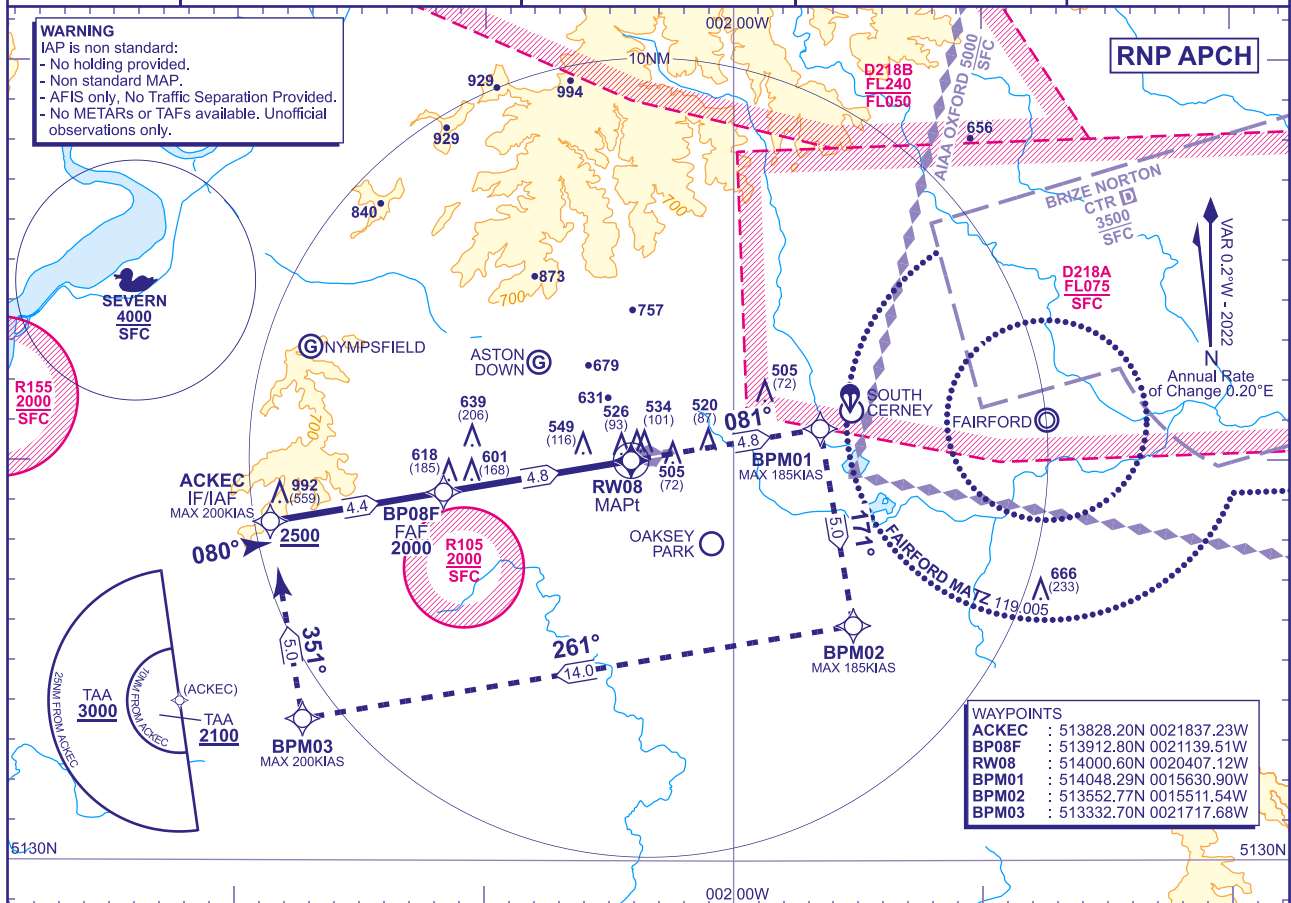
RWY 08

(ACFT CAT A,B,C,D)

<div>25</div> <div>MSA 25NM ARP</div>	AFIS 118.430	KEMBLE INFORMATION	AD ELEVATION 436	MIN TEMP -10C TRANSITION ALTITUDE 3000
	LARS 124.280	BRIZE RADAR	THR ELEVATION 433	
	ZONE 119.005	BRIZE ZONE	OBSTACLE ELEVATION 992 AMSL (559) (ABOVE THR)	
			BEARINGS ARE MAGNETIC	

WARNING

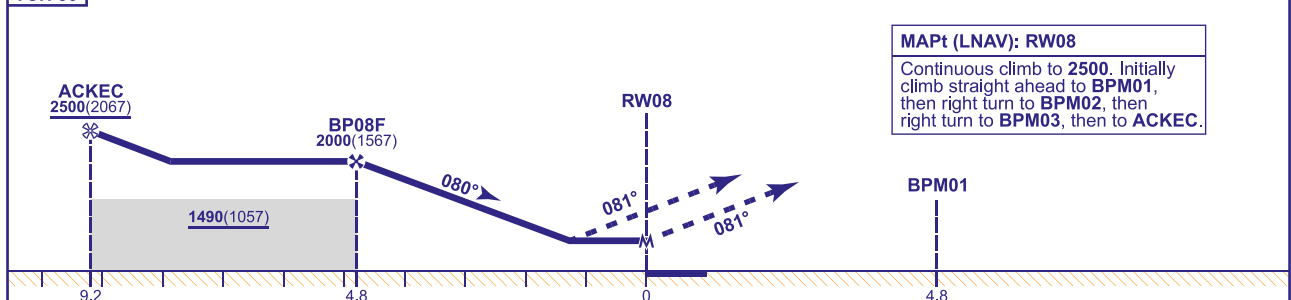
- IAP is non standard:
- No holding provided.
- Non standard MAP.
- AFIS only. No Traffic Separation Provided.
- No METARs or TAFs available. Unofficial observations only.



RECOMMENDED PROFILE VNAV Vertical Path Angle 3.0° (LNAV 5.24%), 319FT/NM

NM to RW08	4	3	2
ALT(HGT)	1760(1327)	1440(1007)	1120(687)

TCH 50



MAPt (LNAV): RW08

Continuous climb to 2500. Initially climb straight ahead to BPM01, then right turn to BPM02, then right turn to BPM03, then to ACKEC.

Aircraft Category	A	B	C	D	Rate of descent	G/S KT	160	140	120	100	80
OCA (OCH)	LNAV/VNAV	940(507)	940(507)	1040(607)		FT/MIN	850	740	640	530	420
	LNAV	940(507)	940(507)	1040(607)							
VM(C)OCA (OCH AAL)	Total Area	950(514)	980(544)	1160(724)	1270(834)						

- NOTE**
- 1 IAP only available during notified ATZ HRS and AFIS available.
 - 2 IAP is in Class G airspace.
 - 3 Pilots are advised of gliding activity in the vicinity of Kemble.
 - 4 Pilots are advised of IAPs to RWY 07/25 at RAF Brize Norton.
 - 5 RAF Fairford notified operational by NOTAM.
 - 6 Use of IAP is strictly PPR from the aerodrome operator.
 - 7 Pilots are required to remain clear of controlled airspace during the missed approach.
 - 8 RAF Brize Norton frequencies are intended for transit and/or a LARS service only and do not provide approach to Cotswold airport as described in the pilot brief.

CHANGE (2/25): FREQUENCIES. FAIRFORD MATZ. SEVERN AREA. SPECIFICATION CHANGE.

AERO INFO DATE 02 DEC 24

AD 2-EGBP-8-1